

Bundaberg Community Centred Solutions



Funded By



Australian Government
Department of Social Services

Delivery Partners





Acknowledgement

We respectfully acknowledge the Aboriginal and Torres Strait Islander people's the First peoples of Australia and pay our respects to elders past and present.

The Wide Bay Region in Queensland is located on the country of the Taribelang Bunda, Gooreng Gooeng, Gurang, and Bailai Peoples (recognised custodians of the Bundaberg Region); the Butchulla people (recognised custodians of the Fraser Coast Region); the Gubbi Gubbi (or Kabi Kabi) people (recognised custodians north of Brisbane to the Gregory and Isaac Rivers South of Bundaberg); and Wakka Wakka people (recognised custodians Nanango north to Mount Perry behind the Coast Range; west to Boyne River, upper Burnett River, and Mundubbera; at Kingaroy, Murgon and Gayndah).

Thank you

This report has been developed by Wide Bay Kids Community Inc. for Bundaberg Neighbourhood Centre as a community development project funded by The Department of Social Services via Social Shift funding 2023 -2024. Updated January 2025.

Contents

2	Acknowledgement
4	Project Purpose
4	Quality Outcomes Framework
5	Methodology
5	Theory of Change
5	Six Phases
6	Story on a Page
7	Learnings on a Page
8-9	Outcomes Achieved
10	What is Next on a Page
11	Future Project Recommendations
12	Appendix: Stakeholder Engagement
13-15	Appendix: Analysis Snapshot
16	Appendix: Community Conversation
17-18	Appendix: Community Forum
19-20	Appendix: Bundaberg Health Care Ecosystem
21	About the Delivery Partners

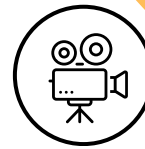
Project Purpose

- Identify all relevant support services and agencies in the Bundaberg Region that can collectively, help to provide more timely and appropriate support to people in need.
- Map existing service gaps and identify the areas where wait lists exist.
- Initiate discussion forums with like minded services to understand how existing silos can be broken down to service all our community needs.
- Design a model for sharing and collaborating professional staff and a strategy for attracting more allied health practitioners to our region.

Quality Outcomes Framework

PRIORITY	KPI	IMPLEMENTATION
Data	A list of collaborating services and agencies	Ecosystem Map
Collaboration	A decrease in service waitlists for all service agencies.	Working together commitment
Alcohol & other drugs and mental health, Family and domestic violence and Employment.	A longer term decrease in the statistical data regarding people with complex needs.	Partnerships formed that remove client eligibility barriers. Person centred approach.
Wide Bay Burnett Regional Plan	Solutions on region-specific challenges and opportunities.	This project aims to see agencies working together
Bundaberg Community Development Strategy	Connecting services & people to focus on solutions.	On going facilitated group

Methodology



WATCH NOW



Theory Of Change



Community

Continue to support needs across the sector. with a leadership group, a peer group, and continuous improvement events.



Collaboration

Bring people together to share the ideas and solutions as a result of conversations. Introduce a Working Together Commitment model adapted to sector needs.



Conversation

Bring people together to workshop strategies and frameworks to find solutions to the common barriers of Attraction and Retention.



Connection

Build trusting and meaningful relationships across the sector within private and public services. Create a more welcoming community culture.



Six Phases

Practice

Continue to work together and actively participate in a best practice approach.

Explore

Gather data to identify gaps in the sector by mapping existing allied health services available and their waitlists in the Bundaberg region

Discover

Engaging stakeholders in community conversations to identify barriers to recruiting and retaining staff.

Design

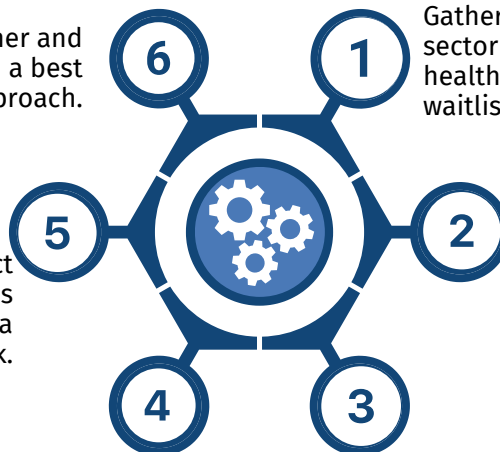
Bring people together by hosting strategic conversations use the evidence collected to develop a more collaborative helath system in Bundaberg.

Change

Support a positive change movement in the region. Implement actions of a collaborative pilot or test models.

Reflect

Review and reflect on project and identify recommendations for improvement using a quality outcomes framework.



COMMUNITY CENTRED SOLUTIONS

THE STORY ON ONE PAGE



PROBLEM

Long Waitlists
Service Gaps
Workforce Shortages



OUTCOME

To work better together
A whole of community approach
A collaborative model of practice



ENGAGEMENT

36

Community Leaders

Community Members

121

161

Community Organisations

Allied Health Providers

45

11

Community Networks

Peak Bodies, Ed and Gov

5

45

Online Survey

National Data Sources

16

2

Community Conversations hosted

- Average wait time is **13 Months**
- Health Care and Social Assistance **largest growing sector**
- **Workforce shortages** causing service gaps
- 45.9% population have **no tertiary qualification**
- **Challenges** - Attraction, Retention & Housing
- Six **collaborative frameworks** identified
- One **Working together** commitment



WATCH NOW

COMMUNITY CONVERSATION #1

14th May 2024

“How can we leverage our collective expertise and resources to create a more collaborative health system in Bundaberg?”

Honest, Frank Conversations

Connection

Best practice model

Collaborative framework

Shared values & clear purpose

Pool resources

Trust

Bravery to share new ideas

COMMUNITY CONVERSATION #2

21st June 2024

“What would it take to establish a more collaborative health system in Bundaberg?”

Promote positive stories

How can we support un-funded groups

Continue to refine and share ecosystem

Conversations about multicultural migrants and transfer of skills

Talk more about transport and geographical constraints

Shared goals and data

Commitment to regular connection

First Nations perspectives

COMMUNITY CENTRED SOLUTIONS

LEARNINGS ON ONE PAGE

PROBLEM EXPLORATION

Behaviours to change Influencing Drivers

IDENTIFIED ISSUES

Lack of Integrated Approach
 Service Provider Collaboration
 Address Waitlists, Gaps, Workforce
 Barriers: Workforce, Attraction,
 Retention, Housing

SIX INDEPENDENT MODELS



Healthy Cities Framework



Collaborative Care Model



Community-Based Participatory Research



Collective Impact Framework

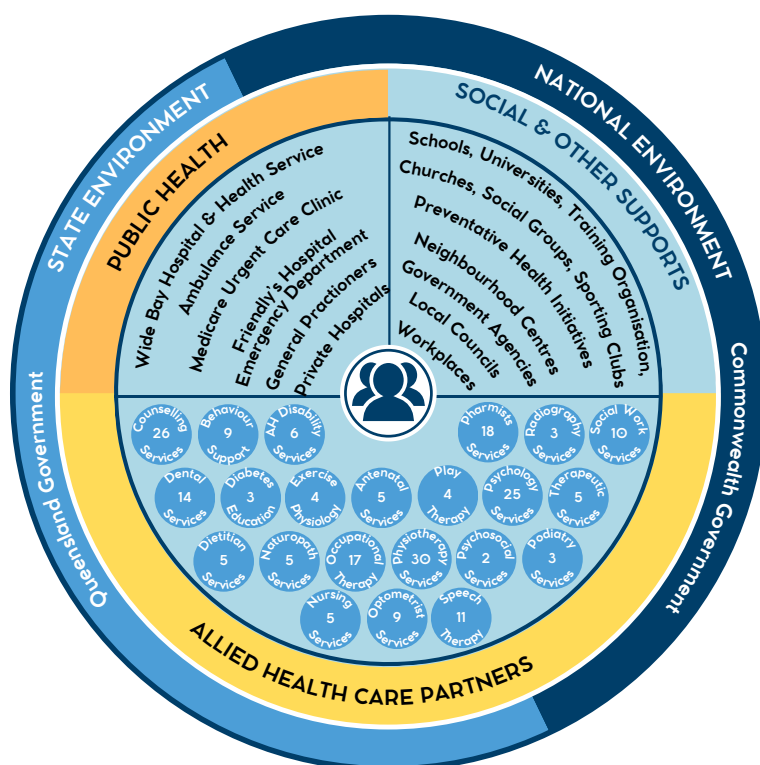


The Hub Model



Asset Based Community Development Framework

BUNDABERG HEALTH ECOSYSTEM MAP

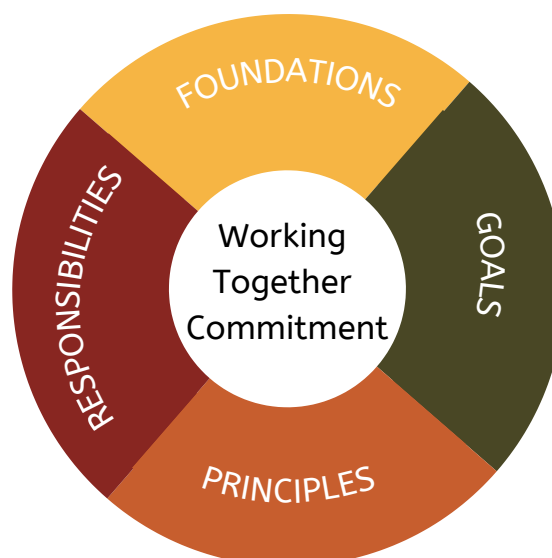


ALLIED HEALTH CARE PARTNERS

SOLUTION FOCUS

Working Together Commitment Framework
 (Created in Bundaberg, 2021)

Components: Leadership, Peer Group, Continuous Improvement



COMMUNITY CENTRED SOLUTIONS

OUTCOMES ACHIEVED

Ecosystem created - living document including the whole of the community system and 219+ Allied Health Professionals identified in Bundaberg.

We spoke to:

- 36 Community Leaders
- 121 Community Members
- 161 Community Organisations
- 45 Allied Health Providers
- 11 Community Networks
- 5 Peak Bodies, Government and Education
- 45 online surveys completed
- 16 National Data Sources
- Hosted 1 community conversation with 29 attendees
- Hosted 1 community forum with 35 attendees and 6 guest speakers

This is what they told us:

- Average wait time is 13 Months across public and private
- Health Care and Social Assistance largest growing sector
- Workforce shortages causing service gaps
- 45.9% population have no tertiary qualification
- Challenges - Attraction, Retention & Housing
- Six collaborative frameworks identified
- One Working together commitment

It was identified that the key factors in the Bundaberg community which are acting as barriers against the implementation of a place-based initiative include lack of coordination and collaboration between providers.

Community conversations and forums were used as a tool to bring stakeholders together and build awareness of and engagement with the sector. A platform for collaboration, capacity building, communication, and most of all change.

Step One -This contract: We explored the Problem. Identified the specific behaviours that need to change at a community level of the system. During this step we gained an understanding of the influencing drivers - enablers and barriers of engagement with place-based initiatives in Bundaberg.

COMMUNITY CENTRED SOLUTIONS

OUTCOMES ACHIEVED

Furthermore

1. Community Collaboration - A lack of integrated approach between public and private sectors. At a community level, services and organisations from both public and private sectors would benefit from the implementation of an integrated approach to collaboration.
2. Collaboration and synchronisation of service providers. A Community strategy for a place-based initiative in Bundaberg is necessary. How the sector at a community level comes together to improve.
3. Key Stakeholders working independently - 6 models identified across the sector. A strategic model to integrate the 6 independent models identified in this project with key stakeholders for better communication and collaboration for the whole of community approach.

Six Frameworks identified:

- Healthy Cities Framework
 - Collaborative Care Model
 - Community-Based Participatory Research Model
 - Collective Impact Framework
 - The Hub Model
 - Asset Based Community Development Framework
4. Barriers in Bundaberg for a more collaborative health system. Workforce shortages create service gaps, Attraction, Retention and Housing. Whole clinical journey support for workforce.
 5. Solution focus highlighted - Working Together Commitment Framework created by Community Development Workers at Bundaberg services providers in the Domestic & Family Violence Sector in 2021. This group now continues to support needs across their sector with a leadership group, a peer group, and continuous improvement events.

COMMUNITY CENTRED SOLUTIONS

WHAT'S NEXT ON ONE PAGE

STEP 1 SEEK FURTHER FUNDING APPROVAL

STEP 2 UNDERSTANDING THE BROADER SYSTEM

Understand how the broader system influences the adoption of place-based initiatives and pilots in Bundaberg

CURRENT SITUATION

Agents in Bundaberg Health System:

Different perspectives on workforce shortages and solutions.

Importance:

Engage diverse stakeholders to build a holistic view.

KEY COMPONENTS

Identify Behavioural Forces:

Driving Forces: Factors promoting successful implementation.

Restraining Forces: Barriers hindering implementation.

Collaborative Efforts:

Goal: Bring people together to enhance collaboration and overcome barriers.

STEP 3 THEORY OF CHANGE

Develop a multi-levelled theory of change to guide the successful implementation of place-based initiatives and pilots

KEY PRINCIPLES

1. Local Ownership and Leadership: Created with and for the community to address local health needs.
2. Empowerment: Empower consumers, local providers, and the region to enable small, effective changes to daily business.
3. Grass-Roots Involvement: Collaborate, build local capacity, and tailor services to build a positive community identity and drive behavioural change.
4. Consultation Phase to coordinate key collaborative pilots
5. Host Capacity building workshops with industry experts for a whole of community approach and showcase existing and evolving pilots

COMMUNITY CENTRED SOLUTIONS

FUTURE PROJECT RECOMMENDATIONS

Thoughts on Future Projects : with funding approval

Step Two: Understand the Broader System

Understanding how the broader system influences the adoption of whole of community initiatives in Bundaberg. There are many different agents in the Bundaberg health system - all of which hold a unique perspective on workforce shortages of Allied Health Services and how it can be reduced through place based initiatives. Engaging a diverse mix of stakeholder groups is crucial for building a holistic, population-level picture of the factors which may influence the implementation of a place-based health initiative.

Identify the 'driving and restraining' behavioural forces influencing the successful implementation of a place-based initiative within the Bundaberg community. Bring people together to work more collaboratively using the working together commitment.

Step 3: Theory of Change - Development place-based initiatives and pilots

Develop a multi-levelled theory of change to guide the successful implementation of place-based initiatives and pilots.

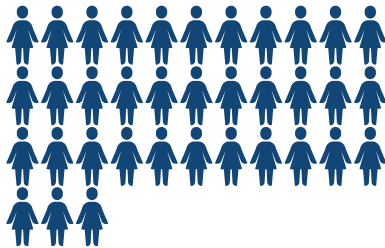
1. Local Ownership and Leadership: Created with and for the community to address local health needs.
2. Empowerment: Empower consumers, local providers, and the region to enable small, effective changes to daily business.
3. Grass-Roots Involvement: Collaborate, build local capacity, and tailor services to build a positive community identity and drive behavioural change.
4. Consultation Phase to coordinate key collaborative pilots
5. Host Capacity building workshops with industry experts for a whole of community approach and showcase existing and evolving pilots.

For an initiative to be successfully implemented in a community, it needs to be owned and led locally. It needs to be designed with the community, for the community to ensure that the initiative is truly responsive to local health needs and priorities. We all want an initiative that works for Bundaberg and providers want the freedom to deliver their services in the most effective way possible. Empower Consumers, local providers and the region. To make small changes in everyday life that works for them and their families. Grass-roots community groups collaborate, build local capacity, and tailor services to best serve the needs of the community. To build a positive community identity that can drive behavioural change and better coordinate services.

Appendix

Stakeholder Engagement

Bundaberg Community Leaders



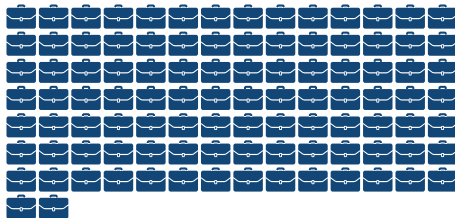
36

Bundaberg Community Members



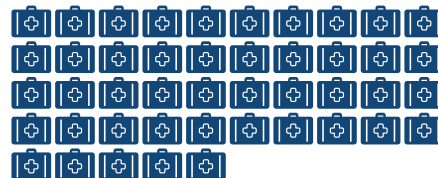
121

Bundaberg Businesses/Organisations



161

Allied Health Providers



45

Peak Bodies, Education & Government



5

Online Survey Responses



45

National Data Sources Reviewed



16

Sources: Bundaberg Regional Council and Queensland Government Statistician's Office, Bundaberg LGA AHP Workforce - PHN, Regional QLD Jobs data: Anticipating Future Skills. National Medical Workforce Strategy 21-31. National Rural Health Alliance, HealthWork AHP Workforce, QLD Small Business Commissioner, Health & Wellbeing Qld. Attract Connect Stay, ABS Census, APHRA ,

Appendix

Analysis Snapshot

National



Career Pathway

- Lack of levers on whole clinical journey - from secondary school to university, to post graduate training and the broader policy environment.
- Recruitment of rural students into healthcare with end-to-end training.



Connectivity

- Digital health and connectivity are important enablers to access the health system.
- Equitable access to digital health and connectivity is crucial to supporting improved health outcomes



Maldistribution

- The maldistribution of health workforce to regional, rural or remote communities contributes significantly to access of healthcare and health services
- More support for International health graduates & the locations they live and work in.

Local



Attraction

- The pool of local qualified workforce is low.
- Attracting qualified candidates to the region is expensive and competitive.
- Lack of shared resources and collaboration in across private & public sector.



Housing

- Competitive housing market and lack of rental properties available increases pressure of attracting new people to the region.
- Homelessness is high and increasing.



Retention

- Losing workers to other agencies or into private practice is a high risk.
- Lack of unique value proposition and positive workforce culture is lacking.
- Adjusting to change workforce challenges considering career & life stages

Sources: Bundaberg Regional Council and Queensland Government Statistician's Office, Bundaberg LGA AHP Workforce - PHN, Regional QLD Jobs data: Anticipating Future Skills. National Medical Workforce Strategy 21-31. National Rural Health Alliance, HealthWork AHP Workforce, QLD Small Business Commissioner, Health & Wellbeing Qld. Attract Connect Stay, ABS Census, APHRA ,

Appendix

Analysis Snapshot

Bundaberg Overview

- Average wait time is 13 Months
- Health Care and Social Assistance largest growing sector and employer
- Workforce shortages causing service gaps
- 45.9% population have no tertiary qualification
- Challenges - Attraction, Retention & Housing
- Work together better - best practice model

Bundaberg Workforce Data

- 50.8% of population are women
- 16% of the population is aged between 35-49 years
- 25-54 y/o highest workforce with only 5.3% unemployment rate
- 13% are migrants
- 45.9% have no qualifications

Bundaberg Industries

- Health Care and Social Assistance
- Retail
- Agriculture, Forestry and Fishing
- Education and training
- Construction

Sources: Bundaberg Regional Council and Queensland Government Statistician's Office, Bundaberg LGA AHP Workforce - PHN, Regional QLD Jobs data: Anticipating Future Skills. National Medical Workforce Strategy 21-31. National Rural Health Alliance, HealthWork AHP Workforce, QLD Small Business Commissioner, Health & Wellbeing Qld. Attract Connect Stay, ABS Census, APHRA ,

Appendix

Analysis Snapshot

Barriers to Watch

- Staff retention
- Complexity of accessing support
- Cash flow
- Economic uncertainty
- Shrinking margins
- Policy Chnages

Attraction & Retention

- Adjusting to change
- Personal v's Professional satification
- Workforce challenges considering career & life stages
- Welcoming community culture
- Whole family approach
- Social connection
- Successful attraction and retention strategy needs to be owned and led locally

Sources: Bundaberg Regional Council and Queensland Government Statistician's Office, Bundaberg LGA AHP Workforce - PHN, Regional QLD Jobs data: Anticipating Future Skills. National Medicial Workforce Strategy 21-31. National Rural Health Alliance, HealthWork AHP Workforce,QLD Small Business Commissioner, Health & Wellbeing Qld. Attract Connect Stay, ABS Census, APHRA ,

Appendix

How can we leverage our collective expertise and resources to create a more collaborative health system in Bundaberg?

Bundaberg Neighbourhood Centre, together with Wide Bay Kids Community Inc and Welcome to Bundaberg invite you to contribute to a conversation about health workforce retention, client access and the healthcare ecosystem in Bundaberg.

SCAN



Tuesday 14th May 2024

9am for 9:30 start – 12:30pm

H2O Function Room 7 Quay St, Bundaberg

Bookings Essential: trybooking.com/CQXYE

Agenda

- 9am: Arrival – Networking
- Welcome. The data. What the evidence tells us
- Discover & identify barriers & enablers to recruiting & retaining staff in Bundaberg
- Exploring the gaps
- Community focused solutions
- Recommendations for improvement

Partners:



Funded:

Australian Government
Department of Social Services

Appendix

What would it take to establish a more collaborative health system in Bundaberg?

Bundaberg Neighbourhood Centre, together with Wide Bay Kids Community Inc and Welcome to Bundaberg invite you to explore solutions and share your expertise

Friday, 21st June 2024, 12pm – 3pm

Bundaberg Multiplex, 1 Civic Ave, Bundaberg

Hear from a panel of Industry leaders, service providers and community influencers who have successfully partnered to make a difference.

Hear inspiring stories about collaborative projects, the challenges faced, and the outcomes achieved. Together, we'll explore innovative and alternative approaches to service provision and how these efforts are effectively addressing community needs through collaboration.

You will have the opportunity to share your thoughts, ideas and suggestions, creating a dynamic platform for community involvement and feedback

Bookings Essential: www.trybooking.com/CSHCP

Free catered working lunch provided

Register



Partners:



Funded:



Australian Government
Department of Social Services

Appendix

Bundaberg Community Centred Solutions Forum

Guest Speakers and Q & A PANEL

REUBEN WHARERAU

Physiotherapist & Director
Coral Coast Physiotherapy &
Allied Health Clinic

SARAH JAMES

Social Worker, Behaviour Practitioner and
General Manager Specialist Services
Community Lifestyle Support

KATE GILES

Do Your Thing
Bundaberg Regional Council

DANNI STRAINERI

Arts in Health
Wide Bay Hospital & Health Service

GAYLE REYNOLDS

Co-Founder Wide Bay Kids and Welcome
to Bundaberg

STACIE RAE

Impact Community Services

CRAIG LEAR

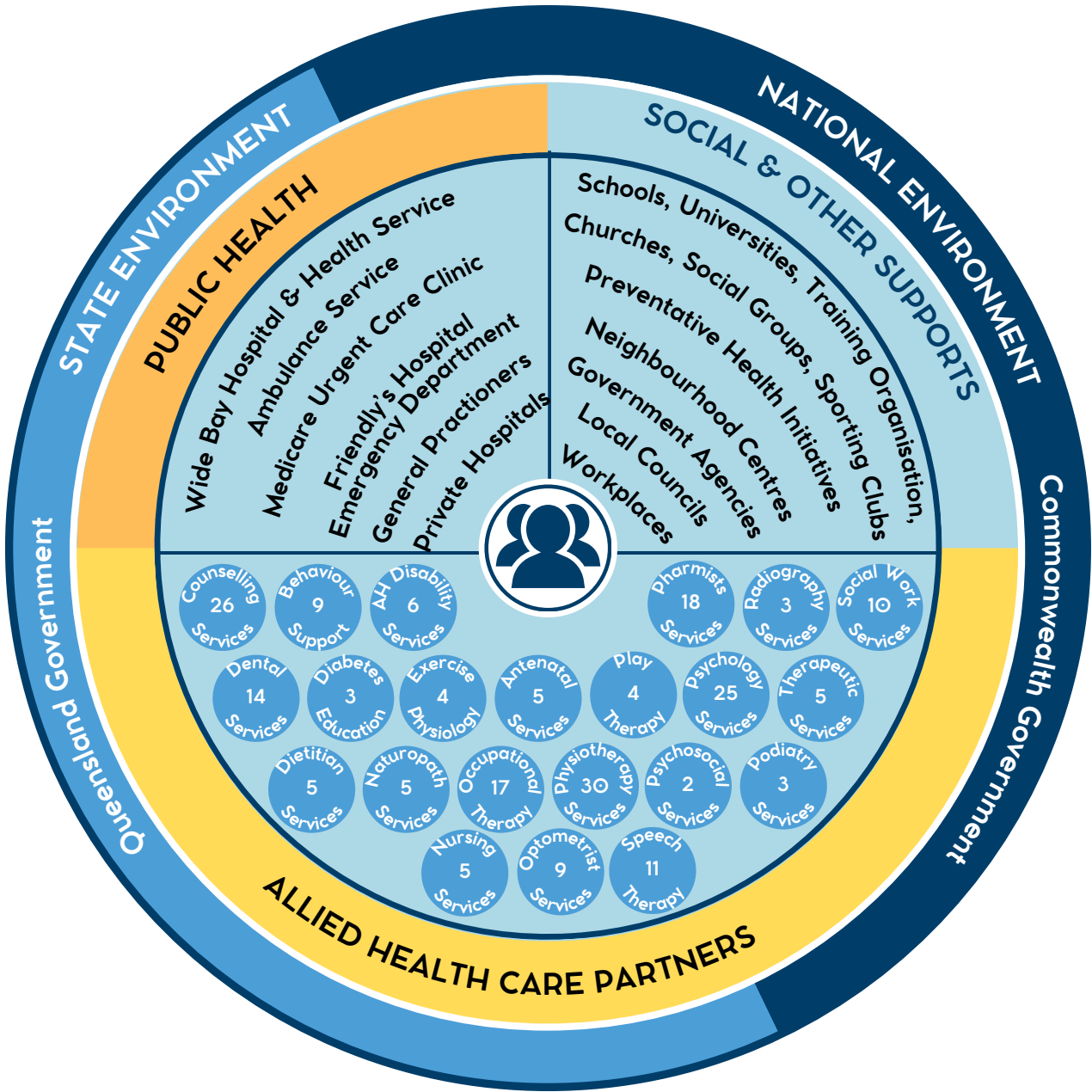
Piersons Services

ANGELA TWYFORD

Co-Founder Wide Bay Kids and Welcome
to Bundaberg

Appendix

Bundaberg Health Care Ecosystem



219 +

ALLIED HEALTH CARE PARTNERS

ALLIED HEALTH CARE PARTNERS

Behaviour Support 9

Applied Techniques Training
Community Solutions - Bundaberg
Horizon & Beyond Support Services
Open Minds Australia
Phoenix House
Studio 2 Forty-Two Pty Ltd
Thyme Psychological Services
Serenity Now Psychology - Sandra Moonie
Wide Bay Social Work Services

Antenatal Services 5

IMPACT Community Services
Connected Midwifery Wide Bay
Wide Bay Doula Services
Joyful Birthing Doula Services
IWC

Counselling Services 25

Phoenix House
Rivendell Equine Assisted Therapy
Play & Creative Therapy Bundaberg
IMPACT Community Services
Actum Counselling
Alcoholics Anonymous
Beyond Horizons
Brave Brothers
Bundaberg Family Relationship Centre
Bundaberg Mobile Counselling Service
CatholicCare
DrugArm
Finding the Light
Functional Family Solutions
Grace Living Ministries
Headspace
Horses In Lives
Joan Lane Counsellor
Lives Lived Well
Lutheran Community Care
Open Door
Pro Motive Bundaberg
Rodney Nembach
The Relationship Mechanic
UnitingCare Community

Nursing Services 5

Blue Care, Masters Lodge
LiveBetter
Next Nurse
Nurse Next Door
Ozcare

Dental Services 14

1300Smiles
Acclaim Dental
Barolin Dental
Brett Phillips
Bundaberg Denture Clinic
Coral Coast Dental
Eastside Dental
Greg Whalley Dental
Harris Dental Boutique
IWC Dental
Prestige Denture Clinic
Active Orthodontics
Steven Cook
Van Der Walt Dental

Podiatry Services 3

Foot Motion
Advanced Foot Care Bundaberg
Hinkler Podiatry

Occupational Therapy 17

A'Bell Planning and Support Services
All Bases Covered
Allison Foster Occupational Therapy
B-Transformed
Bridges Health & Community Care
Bundaberg Occupational Therapy
BUSHkids
CatholicCare
Choices Occupational Therapy
Community Allied Health Therapy Services
Coral Coast Physiotherapy
Erin Pratt Occupational Therapy
Friendly's Allied Health Services
Ozcare Community Care
Phoenix House
Therapy Care Group
Therapy Connect

Speech Therapy 11

Amanda Devillers
B-Transformed
BUSHkids
Clarity Speech Pathology
Coral Coast Physiotherapy
Choice, Passion, Life, Bundaberg
Flourish Speech Pathology
Pivot 21 Allied Health Services
Jennifer White
Stacy Slean Speech Pathology
Therapy Connect - Online Therapy

Diabetes Education 3

A'Bell Planning and Support Services
IMPACT Community Services
Pivot 21 Allied Health Services

Dietitian Services 5

B Transformed Pty Ltd
Health First Group,
Bundaberg
Pivot 21 Allied Health Services
Knight Allied Health Care
Ann-Maree Block

Therapeutic Services 5

Beyond Horizons
Horizon & Beyond Support Services
Positive Steps Mentoring
Thyme Psychological Services
Wide Bay Social Work Services

Psychosocial Services 2

Horizon & Beyond Support Services
IMPACT Community Services

Psychology Services 25

Beyond Horizons
Central Qld Indigenous Development
Edon Place
Alberto Imbrogno Psychologist
B-Transformed
Branyan GP Super Clinic
Branyan Street Allied Health Services
Bridges Health & Community Care
Carol Gazzard
CatholicCare
Chi Cheng
Counselling of the Deep
Gretta Waters
Headspace
Coastal Life Therapies
Jeanne Ferguson Psychology
Oceanview Psychology
Phoenix House
Serenity Now Psychology - Sandra Moonie
Studio 2 Forty-Two
Terrina Mitchell
Tessa Hall
Therapy Connect - Online Therapy
Thyme Psychological Services
Replenish Psychology

AH Disability Services 6

Carinbundi
Community Lifestyle Support
Southern Cross Support Services
AEIOU
Local Area Coordinator
(IWC & BushKids)

Naturopath Services 5

Bargara Beach Holistic Health Centre
Gordon Ferguson
Nurtura Health
Rod Kemps Naturopathic Centre
Therapeia Health

Exercise Physiology 4

B Transformed Pty Ltd
Coral Coast Physiotherapy
Ozcare Community Care
Pivot 21 Allied Health Services

Play Therapy 4

4 Seasons
Play & Creative Therapy
Bundaberg
Connections Play Therapy
Little Life Warriors Play Therapy

Pharmists Services 18

Bargara Pharmacy
Burnett Heads Pharmacies
Burrum Street Pharmacy
Chemist Warehouse
Coral Coast Pharmacies
Crofton Street Pharmacy
Eastside Pharmacy
Friendlies Chemist
Friendly Society Pharmacy
Olsens Corner Pharmacy
Pharmacy Central
Priceline Pharmacy
Ramsay Pharmacies
Terry White Chemists
West Bundaberg Pharmacy

Optometrist Services 9

Christensen Harbison Optometrists
Clear Optometry
Geoff Blackwell
Hinkler Eyewear
OPSM
Outlook Optical
Specsavers
Optical Superstore
Wilson Eye Centre

Radiography Services 3

Bundaberg Radiology
Coral Coast Radiology
IMED

Social Work Services 9

4 Seasons
A'Bell Planning and Support Services
CatholicCare
Choice, Passion, Life Bundaberg
Central Qld Indigenous Development
Edon Place
IMPACT Community Services
Regather Therapeutic Support
Wide Bay Social Work Services

Physiotherapy Services 30

Active Physiotherapy Solutions
4670Physio
Active Physiotherapy Solutions
Amos Cody
Andrew McKay
Axion Biomedical
Barolin Physiotherapy Services
Barry Czitan
Ben Heidenreich
Bourong Street Physiotherapy Centre
Branyan GP Super Clinic
Bundaberg Allied Health Services
Bundaberg Physiotherapy Centre & Sports
Coral Coast Physiotherapy
Cory Jensen
Elizabeth Hawe
Friendly's Allied Health Services
Giles Martin
Health First Group
Pivot 21 Allied Health Services
Jai Schofield
Julie-Anne Zahn
Kate Baldry
Laura Greenhalgh
Neil Petersen
Quay Street Physiotherapy
Rachael Donoghue
Shaun Lynch
Therapy Connect - Online Therapy
Trudy Harbourne

Bundaberg Community Centred Solutions

This report has been developed by Wide Bay Kids Community Inc. for the Bundaberg Community centred Solutions project, managed by Bundaberg Neighbourhood Centre, as a community development project funded by The Department of Social Services via Social Shift funding 2023-2024.

About the delivery partners:

Wide Bay Kids Community Inc is a community led non government not-for-profit organisation committed to connecting people living in the region with each other and services and business. We look at complex social issues affecting the Wide Bay and help solve them at a community level. We use an asset strengths based community development approach in everything we do. Connecting with community at all levels to create real system change to benefit everyone living in the Bundaberg region.

Welcome to Bundaberg aims to improve the health, wellbeing, work and lifestyle outcomes of people living in the Wide Bay region by activating and implementing various community-led strategies across a range of services for a more connected cohesive community.

Bundaberg Neighbourhood Centre, as a Not-for-Profit Charity is a place where community connects, providing connections to support services and agencies. It supports community based organisations and cultural groups to become self-reliant.

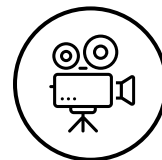
For enquiries:

Gayle Reynolds

Phone: 0427 523 289

email: admin@widebaykids.com.au

Visit: 184 Bourbong Street, Bundaberg



WATCH NOW



Watch Gayle Reynolds from Wide Bay Kids and Corrie McColl from Bundaberg Neighbourhood Centre discuss this project.

Funded By



Australian Government
Department of Social Services

Delivery Partners

